

APRIL 2008

News



HATTIE WEBB HOUSE
(More pictures on P2)

New KASBAH Project Opens In June!

A new KASBAH supported living scheme in Medway is now ready for occupants. All of the KASBAH staff & trustees have worked hard to get it up & running. It has taken five months but we are very proud of our achievement & will be having a grand opening which we hope you will attend. **This has been set provisionally for 19th June at 11.00am, but is as yet subject to final confirmation, so please keep an eye on our website for any updates, & check first before travelling.**

KASBAH has thought long & hard about the right name for the project & we have decided on 'Hattie Webb House'. Hattie has been a valuable & key figure in taking our established Independent Living Project forward. She is a very talented & accomplished musician, & we are really thankful for the support, musical skills, sheer passion & enthusiasm Hattie has shown for our charity as a whole.

Hattie Webb House represents our feelings of what Hattie herself embodies; joy, hope, inspiration & most importantly that anything is possible if you truly believe in it. Hattie has happily agreed to be involved in this new project & show her support, & everyone at KASBAH would like to say a heartfelt thank you to Hattie, Graham & the whole Webb family for their belief & support.

Hattie Webb House will house up to four young adults with limited support to ensure that they lead full & happy lives in the Medway area. KASBAH is also able to offer day training in areas such as budgeting, cooking skills, travel training, shopping, social interaction & much more. There is a daily charge for this service that can be arranged through direct payments if you have a care manager.

For further details contact us at the main office.

In This Issue:

Contents	P
<i>New Project To Open</i>	1
<i>Status Change</i>	2
<i>A Word from Emma</i>	2
<i>KASBAH AGM</i>	3
<i>Windchimes</i>	3
<i>SNAAP</i>	3
<i>Goodbyes</i>	4
<i>Hellos</i>	5
<i>Vacancy</i>	5
<i>Kasbah Klub</i>	6
<i>Easter Party</i>	6
<i>Venues</i>	6
<i>For Younger Members</i>	7
<i>Your Voice Event</i>	7
<i>Black Pearls</i>	7
<i>Shows & Events</i>	8
<i>M4 Mobility Ltd</i>	8
<i>KASBAH News</i>	9
<i>Floating Support</i>	10
<i>Out Of The Bottle</i>	11
<i>Spring Wordsearch</i>	12
<i>£6 Will Help!</i>	12



INSIDE HARRIET HOUSE



Change Of Legal Status For KASBAH

Dear Member

KASBAH (Kent Association for Spina Bifida & Hydrocephalus), charity number 247962, is transferring all of its assets, services & working practices to Kent Association for Spina Bifida & Hydrocephalus, limited company no 6465666.

We will be dissolving the original charity, & operating under the new company, limited by guarantee. We will continue to have charitable status & our new charity number is 1123362.

There will be no break in staff service, no change in the services or specifications that we provide. As there is no name change, financial arrangements will remain the same.

If anyone has any queries or concerns, please contact Emma Carver, the Services Manager.

Yours faithfully

The KASBAH Team



A WORD FROM EMMA



Hello Everyone!

I have tried my best to make direct contact with as many of KASBAH's members as possible but I am aware that I still have a long way to go. I just wanted to assure you all that I'm here to help and support you in any way I can.

I feel that the KASBAH staff, trustees & I have made massive progress in taking KASBAH forward, but I welcome any feedback you may have. KASBAH is now looking at a long & positive future. If you have any queries or concerns, please discuss them directly with me.

Kind Regards Emma Carver



KASBAH is planning to hold an earlier AGM this year.

The KASBAH Annual General Meeting

will be held at 10am on Sunday, 6th July at
Windchimes, Reynolds Close, Herne Bay, Kent CT6 6DS.

If you would like to have a specific point added on the AGM agenda, please inform the office as soon as possible & **by 28th April at the latest** to ensure that we can circulate the agenda in plenty of time.

If you are unable to attend, KASBAH is able to arrange for you to vote by proxy, but you will need the correct form to do so, available from the office.

About Windchimes

Windchimes is a new children's centre, designed completely to meet the needs of disabled children. We have picked this venue as it a perfect opportunity to spend the rest of the day at the seaside. It has plenty of parking, disabled access & is perfect for you to bring along your children too. KASBAH has arranged for childcare to be provided on site, there is a soft play room, numerous facilities, games, arts & crafts on offer & an adventure playground. So have an hour with KASBAH to hear about our progress, have your views heard & let the children have fun with trained childcare providers.

SNAAP (Special Needs Advisory & Activities Project)

SNAAP (Special Needs Advisory & Activities Project) supports families who have children with any special need or disability living in the Canterbury & Coastal area.

It aims to provide good quality information & support to families & carers, to enable them to help themselves & their children. It also aims to open up more leisure opportunities for children with disabilities & special needs & their families. At the heart of SNAAP lies a fundamental belief in informed parental choice, empowering parents to access the very best services & support to ensure that their children achieve their goals in life.

"Life is a fight, SNAAP takes away that fight" - Parent

If you are a parent/carer of a child with a special need or disability please contact SNAAP by email or phone for information, advice & support:

SNAAP
Windchimes, Reynolds Close
Herne Bay, Kent CT6 6DS
TEL: 01227 367555
EMAIL: events@snaap.org.uk
www.snaap.org.uk

Impressions of Windchimes from a KASBAH parent:
Windchimes is a lovely place. Whilst having only 6 bedrooms for respite, it does have a Jacuzzi, a child's computer room and a kitchen where teenagers can learn to cook. What does it have for KASBAH? Well it has a very nice meeting room which is available for hire. There is a room that can be divided into three, which would be useful for workshops. Windchimes is on two levels but has lifts. All in all it is a place worth considering for meetings in this part of Kent. I would recommend it for respite for our families, although there is a long waiting list. More Windchimes are needed throughout Kent.



GOODBYES

GOODBYE *Claire Treveil & Linda Kyle have now left our board of trustees. KASBAH would like to thank them for their support & dedication throughout their time at KASBAH, & wishes them good luck in their future endeavours!*

... & here are some last words from the ladies themselves ...

It's Goodbye from Me ...

I am writing to inform KASBAH members that I have stepped down as Chairperson of KASBAH's Board of Trustees & also resigned as a Trustee.

I first joined KASBAH 13 yrs ago after my eldest daughter was born with Spina Bifida & Hydrocephalus. I have always appreciated the support I received from KASBAH at that difficult time, particularly from the then Adviser, Lynda Atkins. Due to this, both my husband Phil & I have been involved as Trustees at various times & currently I have been on the Board since 2005.

Since I became Chairperson at the end of last year family circumstances have altered. This is going to be a difficult year for my daughter whose care needs have changed & as her main carer I am no longer able to continue as Chair or Trustee. However, I'm sure I shall continue to fulfil a role as a KASBAH Volunteer. I feel that KASBAH provides an invaluable service to the people of Kent.

Finally, I would like to thank the other Trustees for their support in my decision, & to thank all the staff & volunteers of KASBAH for their hard work & the support they have given to me.

Best Wishes to everyone & every success for the future.

Claire Treveil

And It's Good-Bye from me ...

With regret I stepped down as Chair of KASBAH in Oct due to increasing work commitments. Claire Treveil stepped into the breach, for which I thank her hugely. I then took the role of vice-chair until my work load changed again, & now I feel it is time to hang up my KASBAH hat altogether.



Over the years KASBAH & the people associated with it have played a very big part in my life. It supported my family & me through some difficult times with care & sensitivity. It was for that reason I joined the committee (as it was then) - my chance to give a bit back!

Over the years I have done a variety of jobs which I would never have thought of being involved in - helping at a Dog Show, running a garden fete plant stall, & flag day tin rattling - all good fun! Also meeting up with other families affected by Spina Bifida



& Hydrocephalus at AGMs, EGMs & on visits - the Zoo, pantomimes & parties - remember the outfits? I remember one Sunday outing to Greenwich, only to find everything shut - but the park made a good picture backdrop - & look at the hairstyles!

I remember the KASBAH beach hut - with no mod cons - & the KASBAH chalet where we spent our family holidays for years - wonderful Littlestone (I do mean it!)! My husband used to write the newsletter, which would be delivered to another member to be Gestener'd (printed) or what ever it was called then. I have hosted & supplied biscuits for meetings at our homes & met a lot of nice people in the process.

I was one of the original ILP (Independent Living Project) committee members, & when Seabrooke House was opened after a lot of hard work by a lot of people I became a full KASBAH committee member (later trustee). I feel KASBAH & I have grown together, & it is going from strength to strength with a new team in place. Now I would just like to say a big thank to fellow trustees who I leave in the knowledge they will take KASBAH further into the future as a Company with the same philosophy & aims - to support & make better the lives of those with the conditions & those who care for them. And not forgetting staff past & present, who have steered KASBAH through rough & smooth times but are now set fair. My thanks to you all & Good Luck in the future. I hope to meet up with you all at a KASBAH 'do' soon.

With very best wishes

Linda Kyle- ex this & that!

& HELLOs

HELLO

Lucy White recently joined the Seabrooke House team as a Temporary Support Worker. Lucy is young, enthusiastic & wants to learn more about our service.

Welcome Lucy & we all hope you enjoy your time with us.

HELLO

Welcome Back Christine!

Christine Cunningham is now back as the KASBAH Advisor. After three months at Seabrooke House in a supervisory role, Chris has now returned to her Advisor role refreshed & full of enthusiasm.

Please call her on 01474 536501/536202 for advice, information, advocacy or support.

She will generally be in the office on Wednesdays, Thursdays, & Fridays

In an emergency, call anytime & all staff will do their best to assist.

KASBAH Needs New Trustees - Is that you?

As Claire & Linda have now left the Board of Trustees, KASBAH needs new members more than ever to continue taking KASBAH forward. Betty Hague-Smith has agreed to take on the role of Acting Chair until the next AGM & we would welcome applications from all - whether you are a member, carer, interested party, professional or work for a complementary organisation ...

... KASBAH wants to hear from you!

Temporary Vacancy

Sophie Millis, our Senior Support Officer, has had some excellent news - she is to be a mother (end of July) - Congratulations Sophie!!

KASBAH is looking for a minimum of 9 months maternity cover with the possibility of a job share when Sophie is ready to return to work. This post is very demanding. The post holder needs to have excellent all-round administrative skills, experience & knowledge of running a busy office, & a good head for figures as a large part of this position is finance (experience in SAGE would be useful), they also need to be flexible & able to take on new tasks.

If you are seeking a challenge, please contact 01474 536501/536202 for further details.

Do you provide a service or product for the people of Kent?

Or do you know someone who does?

For a small donation, you could advertise in this newsletter & gain wider publicity, new interest & more trade.

**Call the office or e-mail:
volunteer@kasbah.org.uk.**



THE KASBAH KLUB

The KASBAH Klub is growing in numbers. We recently went Ice Curling in Tunbridge Wells - twelve members took part, & as a result four of our wheelchair users are attending the Olympic trials for disabled Ice Curling on Tuesday, 25th March 2008! Good luck!!

The feedback from the KASBAH Klub's trip to EuroDisney was very positive. We took minibuses to ensure that transport was accessible for all. It was felt that the journey was too long & another form of transport will be arranged if we travel abroad again. Overall the trip was a success; every member who attended said that they would definitely like to go again.

KASBAH Klub members are hoping to go away for five days in June to a holiday park & we have lots of exciting ideas for the future. We learn valuable independence skills while we're all having a great time.

If you would like to join, please call the office on 01474 536501.



FADS Easter Party

Young KASBAH Members in Swale are welcome to join FADS (Family Activities for Disabled In Swale).

The next event is an Easter Party at the Faversham Gym Club on April 12th between 5 & 7pm. There is a large trampoline with helpers available, suitable for use by all ages & abilities.

Faversham Gym Club is in Whitstable Road, Faversham, just off the A2.

Call Dorothy Higgins on 01795-534694 for further details.

Future Events - Can You Help?

We would like our events & meetings to have a more widespread distribution around our county.

If you know of any venues, halls, centres, etc, in YOUR part of Kent which are available to groups such as ours, & accessible & suitable for people with disabilities, please let us know some details.

A name, address, or telephone number will suffice, so that we can build up a good knowledge base of suitable places around Kent.

Thank you in advance.
The Kasbah Team.

For Younger Members

KASBAH would like to have a page of its newsletter for the younger members of KASBAH. What would you like to see? And do you want to help in its preparation?

KASBAH has a teenage girl with Spina Bifida and Hydrocephalus who would really like a pen pal - can you help?

Do you ever feel like talking to someone who understands you & what you are going through?

Let us have your requests by the end of May to get them out in the next edition of the newsletter.

Phone the office or e-mail volunteer@kasbah.org.uk. And don't forget to tell us your age!



Your Voice - Join in and get involved

<http://www.yourvoicegroup.org>

For further information & to register your interest contact:

Barbara Robinson
ASBAH House
42 Park Road
Peterborough PE1 2QU

Email: Barabar@asbah.org
Tel: 01733 421322

Up and coming YV event

Looking Good, Feeling Great
Social, Leisure & Self Image

Worsley Park, Manchester
11-13 July 2008

Weekend delegate rate £95 includes accommodation, workshops & meals
Day delegate rate £30 includes workshops & lunch

The delegate rate is being subsidised by Your Voice

Wheelchair Basketball in Swale: The Black Pearls Need You!

The Black Pearls are on the lookout for new players, & you could be just the person we are looking for!!

The Black Pearls are a brand new wheelchair basketball squad based in Sittingbourne, & are on the lookout for new talent to join the squad!!

Whether you are experienced, or you've never played the sport before, you would be perfect, especially as there are no age limits to the sport!!!

Starting from Tuesday 1st April '08 the squad will be meeting at the Swallows Leisure Centre in Sittingbourne every Tuesday 8-10pm.

For more information please contact Sarah Kelly on 07516 605379
or email SittingbourneWBC@aol.com



2008 ROADSHOWS & EXHIBITIONS

If you are able to get there, these shows are ideal opportunities for members to collect information & ideas, try out new things, test, price, assess, & compare, both individually or as a family.

Each show has a slightly different theme.

NAIDEX

National Exhibition Centre
Birmingham

29th April - 1st May

Free entry & a Mobility Loan Point at highly accessible venues.

To register & receive more information call 0844-557-0928 or visit www.naidex.co.uk

- Product Showcase / discounts
- Free lifestyle demonstrations
- Future lifestyles home
- Feature areas with latest independent living info & advice

MOBILITY ROADSHOWS

Stoneleigh Park Coventry
12th, 13th & 14th June

(Also at Royal Highland Centre,
Edinburgh, 25th & 26th April)

Free Admission & Parking

To discover more call 0845-241-0390 or visit www.mobilityroadshow.co.uk

- Latest innovations
- Test drive cars, mobility & other equipment
- Demonstrations & activities for the whole family

BEYOND BOUNDARIES LIVE EXHIBITION

Kent County Showground, Detling, Kent
July 25th - 26th

To book free tickets call
0208-614-0833 or visit

www.beyondboundarieslive.co.uk

- Have a Go sports
- Test drive cars, mobility & other equipment
- Find a holiday destination
- Get expert help & advice
- New gadgets
- Kidzone

NB: M4 MOBILITY HAS MOVED NEXT DOOR - FROM NO 19C TO NO 19 LITTLESTONE ROAD!

M4 MOBILITY LTD

SUPPLIERS & REPAIRERS OF DISABILITY & MOBILITY EQUIPMENT

- NEW & USED SCOOTERS
- SCOOTER SERVICE & REPAIR
- 24HR BREAKDOWN SERVICE
- NO CALL OUT CHARGE (DURING OFFICE HOURS)
- WHEELCHAIR SALES, SERVICE & REPAIR
- DAILY LIVING AIDS
- ARMCHAIRS, RECLINERS
- ELECTRIC BEDS & BEDDING
- STAIR LIFTS



19 LITTLESTONE ROAD
LITTLESTONE
NEW ROMNEY
KENT TN28 8LN
TEL: 01797 367171

We strive to beat our competitors price & service. So give us a try

KASBAH NEWS

A massive thanks to Mr & Mrs Green of Horton Kirby for their continued support & dedication. As members of the Motor Caravan Club they hold fundraising events over the course of the year. 50% of the proceeds will go to KASBAH, which is their nominated charity. The other 50% will be donated to the other fundraisers' nominated charities.

Easter Eggs

KASBAH has been very fortunate to be given over 50 Easter eggs for our members. We will allocate them on a first come, first serve basis & where possible would prefer that *you* come & pick one up (although postage can be arranged). If you or your child would like a chocolate treat, please let us know.



PLEASE LET US KNOW WHAT YOU THINK

Kasbah takes pride in the service it provides to our members & Service Users & we would like to receive your comments about your experience of working with us.

Your feedback is therefore very important so we would like to ask that you send us your thoughts on our service.

It is always so rewarding to receive a compliment, so please do let us know if you are happy with the service that you receive from Kasbah.

Equally, if you are not so happy, it is also important that you let us know that too, so that we can work towards improving our service.

Your comments are essential & your feedback will be greatly appreciated.

Please send all comments to Emma Carver, Services Manager at The Hive.

Thank you.

Our most grateful thanks to Mid Kent College's Hair College which has selected KASBAH to be its nominated charity this year.

New Groups for Medway Area?

Jenny Blair, a Service User who currently works on a voluntary basis at the Sunlight Centre in Gillingham would like to set up a Service User Group/Coffee Circle there on a regular basis.

Would you like the opportunity to be open & honest about your feelings? Be really understood? Gain valuable peer support & advice?

There is also the possibility of a mother & toddler group & a 16-25 group there. However, we do need to know if there is enough support for these ideas.

Please contact Christine Cunningham to let us know of your interest, availability & needs on 01474 536202.

THANK YOU, EURO TUNNEL



KASBAH has been fortunate enough to be nominated as one of EuroTunnel's chosen charities for another year! Emma Carver has been invited to receive a cheque of over £2,000 in Mid April on behalf of KASBAH. This donation is gratefully received & will assist KASBAH in its move forward.

KASBAH is still looking for volunteers for our **Tin Shaker events on 26th, 27th & 28th of June.** Shake a bucket, have a giggle & raise us some valuable funds.

Please call us to pledge your support, offers of help, etc.

FLOATING SUPPORT

There are few things more important in life than keeping a roof over your head – & it's not always easy!

Sometimes, when things start to go wrong, you just need a helping hand from people who understand the problems you are facing & have the contacts & expertise to help you put your life back on course. & that's where Floating Support can help. Managed by Supporting People, a partnership between housing & health departments, KCC Adult Services, the probation service & other support agencies, Floating Support is designed to provide the help you need at the time you need it.

What is Floating Support?

Floating Support is a free service for people in all types of tenancies or homeowners. It is paid for by money provided by government to the Supporting People Team within Kent County Council. The money is used to pay other organisations to provide housing-related support to new & existing tenants or to people who are homeowners or in temporary housing.

The aim is to help people who are in difficulties to remain independent & to sort out any difficulties they are having.

The term "floating" refers to the fact that the support is temporary & is designed to be provided just as long as it is necessary – from a few weeks up to a maximum of 2 years. Floating support is available for single people, couples or those who are part of a family group.

What kind of support is provided?

Floating support can provide help & advice in all sorts of areas. Examples include:

- Budgeting & financial management
- Rent arrears & evictions
- Claiming welfare benefits
- Setting up home & resettlement support
- Understanding tenancy agreements
- Life skills & being independent at home
- Staying safe at home
- Accessing daytime activities, training, education & employment within a community
- Finding a doctor & accessing other necessary services
- Dealing with other agencies
- Neighbour issues

Who can ask for help?

The Floating Support provided by the Supporting People programme is for anyone who needs housing-related support.

It could help you, for example if you:

- Have a learning or physical &/or a sensory disability
- Are homeless or at risk of losing your home
- Are a young person leaving care
- Are a teenage parent
- Are an older person
- Are a woman or man fleeing domestic abuse
- Have mental health problems
- Have drug or alcohol problems
- Have recently come out of prison or are due to be released
- Are a traveler
- Are living with HIV/AIDS
- Are a refugee with leave to stay in the country

Who decides what support I need?

You do! When the Floating Support team agrees that you qualify for help you & your support worker will together agree a support plan that details what you want to achieve. The support plan will identify who is responsible for certain actions, how the support will be provided & for how long. It will be regularly reviewed & you can involve other people in deciding what you want.

When you & your support worker agree that you no longer need support, the support will go to someone else who needs it. But if you feel you need support again in the future, just get in touch & we will take a new referral.

Can I choose who supports me?

In most districts in Kent you can choose from a number of providers who will decide whether or not they can offer you the appropriate support. Alternatively, we can decide which agency is most suitable for your needs.

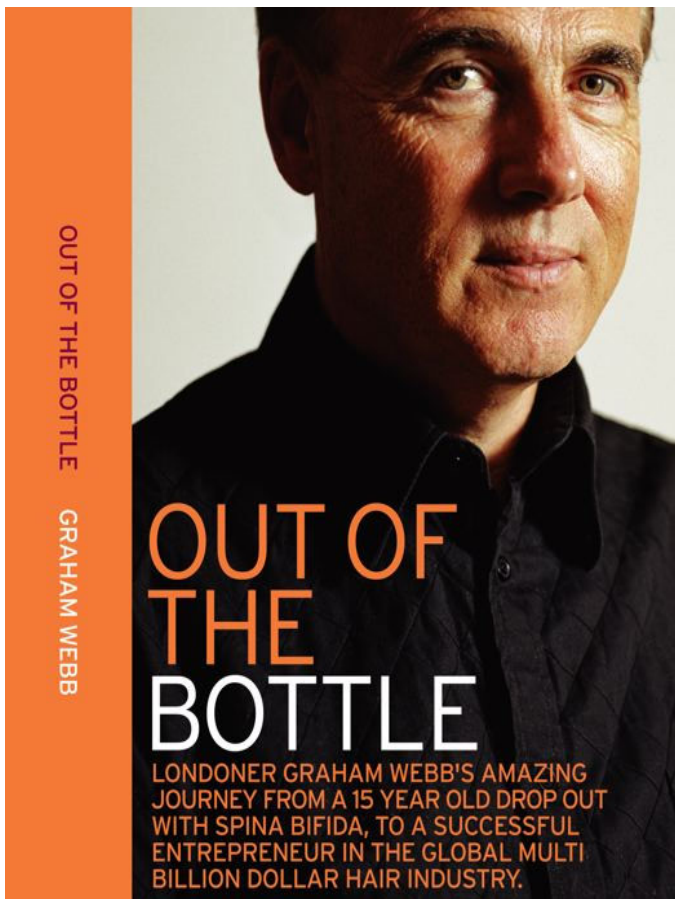
I need help. What do I do next?

Contact the Supporting People team for more information:

Supporting People, Room 4.02, Sessions House, County Hall, Maidstone, ME14 1 XQ
Telephone: 01622 694953 or 01622 694825
email: supportingpeopleteam@kent.gov.uk

Supporting People is committed to providing appropriate support to anyone who needs it, irrespective of sex, disability, race, marital status, age, sexual orientation or religious belief.

(Information courtesy of Supporting People Floating Support, see: www.kent.gov.uk/supportingpeople)



'Out Of The Bottle' tells the story of Graham Webb, who grew up in SE London & dropped out of school at 15 to overcome the challenges of congenital spina bifida & carve a name in global business. Having been a drummer, ship's crewman & many other things, Graham built up the multi million hair care company Graham Webb International. In 2001 it was sold to Wella, (later purchased by Proctor & Gamble).

This riveting account of Graham's personal & professional struggles & accomplishments will strike a chord with readers.

KASBAH benefits from the charity donations made regularly from the book sales. So far Graham has given monies to (amongst others) The Princes Trust, Kent, (to help a young lady with Cerebral Palsy), KASBAH, ASBAH, The Spina Bifida Associations of America, Colorado, Illinois, Michigan, Missouri, & Pennsylvania, The Mercy Hospital Foundation, Iowa, & The Caron Keating Foundation, UK.

In 2005, Graham was honoured with an MBE 'for services to business, & charity work in Kent'.

Graham's book costs £17.99 (+ Postage & Handling £6.00). All books ordered via Graham's website (www.grahamwebb.co.uk) are personalized & autographed by Graham. But if you don't have internet access, we can order books for you - just contact the office. This book is a great gift & benefits many charities!

Extracts from some of the many comments received:

"Graham, a man with a truly remarkable story"

Jon Snow, Channel 4 News

"I have just been reading your story of being a child in school trying to hide your symptoms of Spina Bifida. I myself was born with Spina Bifida, my Mum at birth noticed the little mark on my back at birth. At the age of 14yrs, unfortunately my spine curved, right rib scoliosis. I thought my life had possibly ended!! At 14yrs old your body image changes so much, mine was changing for the worst! I have experienced all that you did at school, at one stage my knees had to be bandaged, because I kept falling over. I feel like I am the only one in the world at times this has happened to me. I worry about acceptance, people's perceptions of what they see. I fortunately had a fantastic Mum who made me believe I could do anything, & I have done well so far. I am a Senior Staff Nurse, & I live independently. I enjoyed your story, & I am glad you have done so well for yourself, you are inspirational!"

Thank you, 'Jeanette'

"It was such a relief for me to find someone with a similar problem & how they live with it. I think that without reading your book & seeing how you have lived with it, I would have been a lot more nervous about the op & scared about the outcome".

Mark Beesley, Shrewsbury, UK

"Throughout the course of his surgery & treatment, he was always upbeat & positive about the future outcome of his corrected problem & life in general. He is a man of great devotion to his wife, children, friends, business & music. I am going to make his book mandatory reading for my surgical residents".

Dr Lowell Scott Weil, DPM, FACFAS Chief of Staff, Weil Foot & Ankle Institute, Des Plaines, Illinois USA

"Graham Webb's life story of relentlessly pursuing his dreams in the face of daunting obstacles, should be an inspiration & a lesson to us all..."

Sarah Smith, Controller & Chief Accounting Officer, Goldman Sachs, New York City, NY, USA

"Graham Webb is one of those rare individuals who has transformed the ups & downs of life to create his very own fairytale world."

Wayne Blanchard, Senior Marketing & Communications Manager, SABIAN Ltd

"Graham's account of his life & the honesty with which he dealt with a very sensitive aspect of disability, left me full of admiration for his spirit & courage."

Betty Howell, Chief Executive, Compaid Trust, UK



7 The Hive, Northfleet, Kent, DA11 9DE
 Tel: 01474 536501
 Fax 01474 536202
 Email: admin@kasbah.org.uk

Valentine's Wordsearch Winner
 Congratulations to Carly Gadd, who won a selection of Graham Webb hair products. We hope she enjoys them!



Spring Wordsearch

SPRING WORDS LIST

- | | |
|----------|--------------|
| APRIL | LAMBS |
| BIRD | LAWNMOWER |
| BLOOM | MAY |
| BLOSSOM | NEST |
| BLUEBELL | POSY |
| BUDS | PRIMROSES |
| CATKINS | SHOWERS |
| DAFFODIL | SPRING-CLEAN |
| EASTER | SUN |
| EGG | SUNSHINE |
| FLOWERS | WHIT |
| GROW | YELLOW |

L	I	D	O	F	F	A	D	Y	S	O	P
S	M	O	S	S	O	L	B	E	B	M	R
N	Y	E	L	L	O	W	O	I	I	S	I
I	T	M	I	O	B	S	R	W	U	S	M
K	O	R	G	L	L	D	B	N	E	Y	R
T	P	G	O	R	E	T	S	A	E	R	O
A	E	O	R	L	S	H	O	W	E	R	S
C	M	Y	R	A	T	S	E	N	O	D	E
L	A	W	N	M	O	W	E	R	U	R	S
M	L	L	E	B	E	U	L	B	E	H	G
T	I	H	W	S	U	N	S	H	I	N	E
C	N	A	E	L	C	G	N	I	R	P	S

Spring at last! Can you find the Spring words on the left hidden somewhere in the grid above? They are all in straight lines, but can run up or down, forwards, backwards or diagonally left or right.

The unused letters WRITTEN OUT BACKWARDS spell out a common spring phrase; simply send or e-mail it with your name & contact details to:
'Spring Competition', Kasbah, 7 The Hive, Northfleet, Kent DA11 9DE
E-mail: admin@kasbah.org.uk

We will draw the winner from all the correct entries (or those with the highest number of correct answers) received by 1st post on Friday 2nd May 2008.
The winner will receive £20 Wilkinson Vouchers.

JUST £6.00 WILL HELP ENORMOUSLY!

You may recall that members approved a **voluntary** subscription fee of £6 towards KASBAH services at our last EGM.

As it is the start of a new financial year, can we respectfully remind all members who have not already paid a voluntary contribution that all such donations received are greatly appreciated & essential to the funding of the organisation.