

Open Farm Day

KASBAH NEWS

June 2023

On the 11th June, we will be holding our annual open day event at Princess Christian's Farm .

Our gates will be open to enable you to learn about the animals, enjoy the beautiful grounds and meet the amazing individuals who attend the farm.

The farm will be offering animal talks, plant sales, advice and also tractor rides.

You will be able to purchase handmade crafts and enjoy refreshments in the Munchkins Café as well as try out the new trim trail and zip wire which are now in place.

To book your tickets please go to [https://](https://www.tickettailor.com/events/kasbah/864342)

www.tickettailor.com/events/kasbah/864342

Sun 11th June 2023 10:00 AM - 3:00 PM

Princess Christian's Farm, TN11 9LN



If you are interested in booking a respite stay at the farm, please do get in touch either by calling 01732 838408 or email pcfarm@kasbah.org.uk

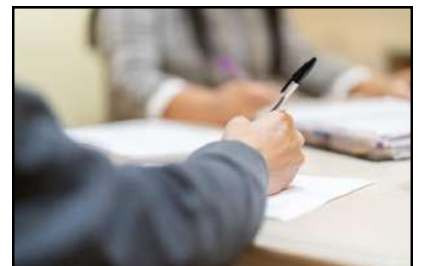
****AGM Date for Diary 30/11/23****

It's that time of the year again, when we ask for your feedback. Please fill out the form inside the envelope and return back to us as soon as you can.

If you would like to send the form back by post then our KASBAH Freepost address is KASBAH Business Response, RTJU-TGUZ-AJUE, Gravesend, DA11 9DE.

Alternatively if you would like to send it via email then please email your completed feedback form to admin@kasbah.org.uk

Your support and feedback would be gratefully received and will be used to review our service provision.



MESSAGE FROM EMMA.....

Hi All

As you aware we have moved back to our own in-house Advisor Service, if you need our help please call the office on 01474 536501. The majority of our support is provided via telephone and email but we do have limited appointments at the office (subject to availability of staff and volunteers).

If you haven't had time to visit our wonderful farm please do and keep an eye on our website for our events and Open Days.

Julie has taken over the newsletter compilation so if you find useful information to share or would like new topics added in, please do let her know at admin@kasbah.org.uk.

I hope you all have a great Summer.

Best Wishes

Emma Carver
CEO KASBAH



NHS Info

Did you know the NHS have lots of easy read resources to help you understand their services and how to get help when you need it.



Easy read leaflet
about NHS 111 -
getting medical help
when you need it but
it's not an emergency

HELLO AND GOODBYE

We would like to give a warm welcome to Maria H who has joined the team at Shortbread House. We also welcome back Charmaine B to Gingerbread House and Courtney R to Rochester Road.

We have sadly said goodbye to Karen Heath after 10 years of working at KASBAH in many roles but most recently as the Complex Needs Manager for Gingerbread & Shortbread House. We are very grateful for her contribution to KASBAH and we wish her the very best for the future.

We also say goodbye to Tayla Parris who is taking up an administrative role elsewhere and but has agreed to stay on bank with us, good luck in your new role.



GINGERBREAD HOUSE

Gingerbread have had a great couple of months. A lot of outdoor activities have been done such as crazy golf and health walks to the prom. It has been fun seeing the guys enjoy the warmer weather. We have a lot of fun things to come such as a holiday to Allhallows and more day trips to the seaside. All have loved working at the farm as well, seeing all the animals and getting jobs done. Everyone loves the baby emus that have been hatching and watching them grow. We look forward to the weather being a bit warmer.



JUNE FUN DAYS

- June 1 is *Say Something Nice Day*
- June 1 is *World Milk Day*
- June 3 is *Chimborazo Day*
- June 3 is *National Egg Day*
- June 4 is *National Donut Day*
- June 6 is *National Yo-Yo Day*
- June 7 is *National Chocolate Ice Cream Day*
- June 8 is *Upsy Daisy Day*
- June 10 is *National Iced Tea Day*
- June 21 is *Go Skateboarding Day*
- June 21 is *National T-Shirt Day*
- June 21 is *National Smoothie Day*
- June 22 is *National Onion Rings Day*
- June 27 is *National Sunglasses Day*
- June 30 is *Asteroid Day*

Look them up to see what you discover !

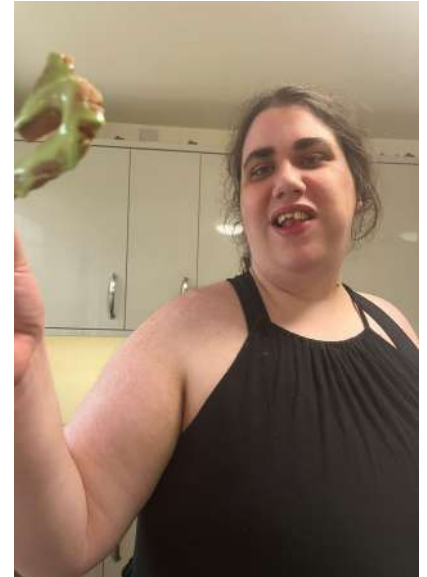
SHORTBREAD HOUSE

Shortbread House are learning to work well together as a team. The life skills lessons that they are doing as a group have been successful in helping to develop their kitchen and gardening skills.

We have made a start on the garden area and let's hope the Spring allows us to make good use of the BBQ that Ben was so excited to discover during his strimming session.

Katy enjoyed making dinosaur cookies and covering them in green icing.

We celebrated the King's Coronation by joining in at the party hosted by the Outreach Team in Blenheim Grove.

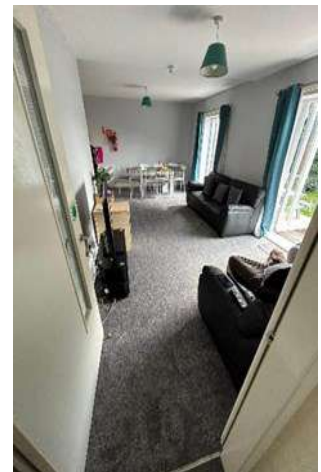


MADDISON HOUSE

Hi All. We have been very busy at Maddison House as usual and have been trying to keep active. We have been enjoying walks, our exercise classes and the sports sessions run by Arron. We had a lovely visit from baby Skye and all had a cuddle.

We have all now paid for Butlins and are all very excited to be going in June, we are going to be having lots of fun and pictures of our fancy dress costumes will follow!

We have had our front room decorated and new carpets fitted, a big thank you to Barry and Peter. We enjoyed a bingo night at Seabrooke House hosted by Jodie and Stacey, we had lots of fun some lovely food and won some great prizes. We are looking forward to the next one!



ROCHESTER ROAD

Over the past few months, everyone at Rochester Road has been out and about in the community, they have participated in Wednesday social skills days where they have gone to the O2, to a social crazy golf over in Lakeside, went to Chessington World of Adventures and spent the day there and ate out.

Mathew Dennis went to Tenerife with his parents for a week, Thomas went to Clacton-on-Sea with his parents for a week, Nicola Devine went to Potters for a week, and Abigail and Amber spent some time with family members.

All the service users participated in the Easter Egg hunt at Princess Christian's Farm and had a wonderful time with everyone there. We ended up with a new garden statue left outside by the drive way by the neighbors across from the farm, and all of the service users agreed that they wanted it for Rochester Road for the garden, a new piglet that has taken center stage as you enter the front door.

We are looking forward to our vacation to Allhallows for a week in June, as soon as we return we will post the photos.



OUTREACH SERVICES

Graham, Geoff, Lexie and Mark have had a weekend away at a caravan on the Isle of Wight, they were very lucky with the weather it was bright and sunny the whole weekend.

Mark is doing well after recovering from his hip replacement surgery, he is getting back to being able to get out and about, he has been on a museum tour in Dartford and a guided trip around the 2nd World War bunkers in Gravesend

Michelle has settled into her new flat, she loves having some outdoor space and is putting planters and seating there ready for the summer months.

We have lots of ideas for our social skills Fridays and are looking forwards to implementing them, we hope to visit the lavender fields and go strawberry picking in June (weather permitting).

Outreach celebrated the King's Coronation by throwing a party at Blenheim Grove, who were kind enough to let us use their common room. It was great fun, we had a raffle and a tombola and raised just over a £100 to spend on a treat on one of our days out.



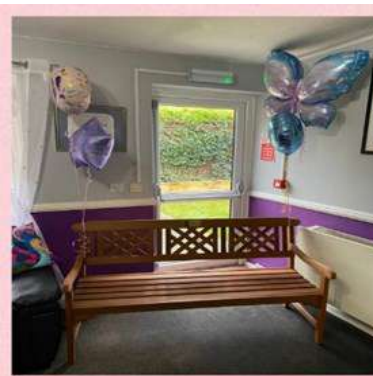
HATTIE WEBB HOUSE

Here at HWH we have had a few Birthdays to celebrate, we all enjoyed celebrating Amy's birthday with a take away and some lovely cupcakes, we had Janine's birthday that we celebrated at Legends café and last but not least we remembered our lovely Emma Hastings whom would have turned 40 on the 28th of March.

We celebrated and remembered her fondly, inviting all the houses to join in and unveiled our memorial bench in Emma's memory, It was a tight squeeze in our little house as the weather was not on our side but we made the most of it and was a lovely day.



We have had a busy couple of months planning new trips as the weather is warming up and look forward to many enjoyable days out. We also look forward to welcoming Richard O'Leary who is moving into HWH at the end of May.



Disability Assist is a charity which helps people with disabilities in Kent to live more independent lives. This means having the right support in place and being in control to live the life they choose.

We are run by disabled people, so we understand the challenges of life with a disability or long-term health condition. We support disabled people to have choice and control in all aspects of their lives

We assist you with information, guidance and support, peer support, advocacy and benefit support such as form filling, preparation for an assessment as well as the tribunal process.

Take a look at our website
www.disabilityassist.org.uk

Call 01233 633187 or email
info@disabilityassist.org.uk



PRINCESS CHRISTIAN'S FARM

Once again we have been able to wow our visitors with the farm. We have had two recent open days: a lambing day in March and Easter Egg Hunt on Good Friday. These dates coincided nicely with the unveiling of the new look reptile room and the arrival of our two Iguanas. We have been working closely with the National Centre for Reptile Welfare to create them the best environment possible and the feedback from the public was amazing.

Mid-March saw our attendees enter The Jim Green Competition at the Ardingly Show Ground. Everyone at the farm has been busy preparing for this special day for many months and what great entries they produced. A scarecrow with a space theme, a space like bird box, a model of the solar system and a cake were all transported very carefully to the show ground. Whilst there, some attendees had to plant window boxes and borders in competition with others. Although we didn't win this time, everyone really enjoyed taking part.

Did you know that Princess Christian's Farm is now famous? The farm was on the BBC South East news at the beginning of April. Liz, Emma and some attendees took part in a short article about the service we run here and the benefits to our service users. Perhaps you saw us?!



The farm is now offering animal sponsorship, so if you have a favourite animal that you would like to sponsor, please do get in touch with Alex on 01732 838408.

Our next open day is Open Farm Sunday on 11th June 2023. Tickets are available to book through our website www.princesschristiansfarm@kasbah.org.uk. We look forward to seeing you soon.

SEABROOKE HOUSE

This month Seabrooke House has been working hard in the garden getting it ready for the fundraising event we are holding in June as we hopefully would like to purchase a summer house with the money raised.

This will be used to give the guys some quite time away from the house, keyworker interviews and garden parties. We hope to see everyone there.

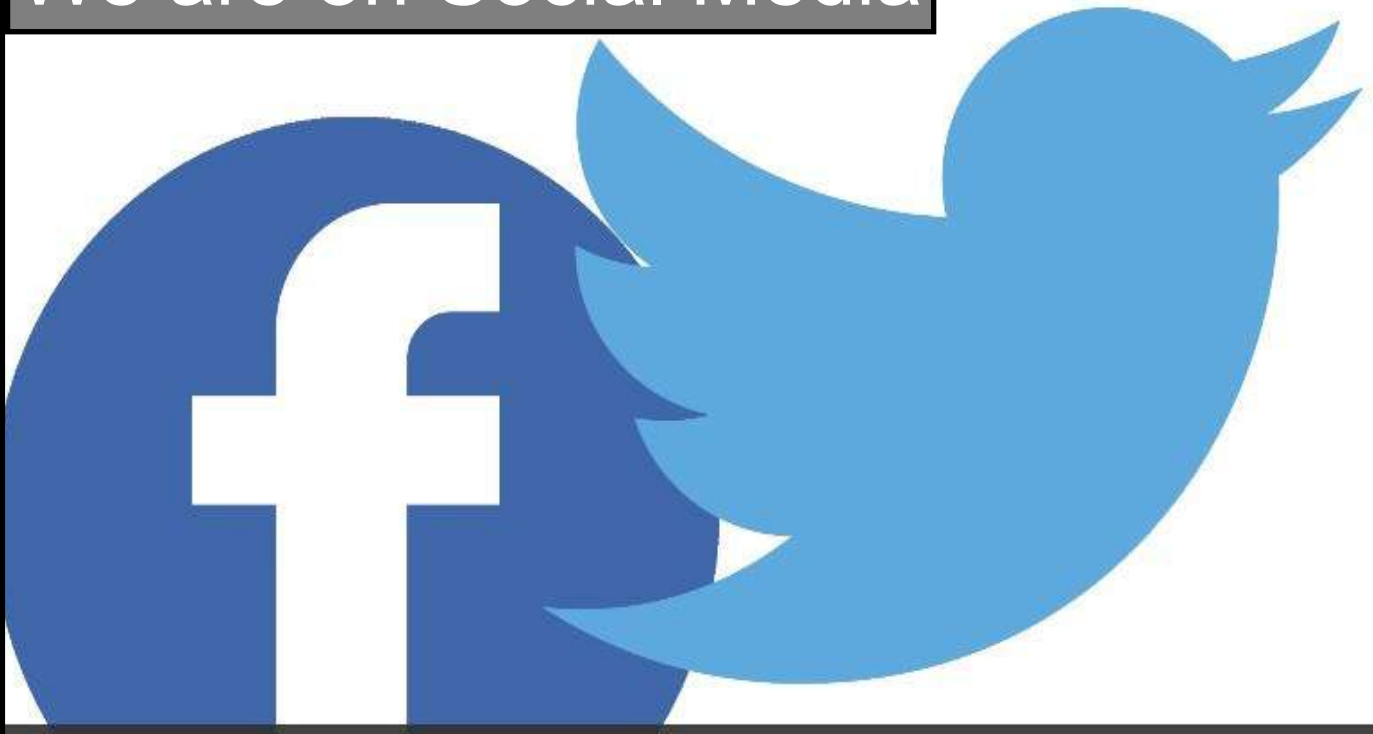
Please join us on 4th June for a fun filled day to raise money for Seabrooke House .

All Welcome 12pm onwards

We also had a nice day out at Gravesend prom followed by fish and chips at the reliance fish restaurant in Queen street which everyone enjoyed. Seabrooke house and day service also had a little party for the King's coronation. We had lots of great food, dancing and party games followed by an epic game of monopoly.



We are on Social Media



Follow us on Twitter and Facebook!

@kasbah_kent

Stay in touch...

Remember the staff at KASBAH are here
to support you.

We can be contacted at our main office at
27-27A East Kent Avenue, Northfleet, Kent. DA11 9HU
by phone on 01474 536501 or email admin@kasbah.org.uk

If you have any suggestions or comments for up and coming newsletters, please get in touch

